

Dual wireless system set-up.

Follow these steps to set-up your sound system with two wireless systems:

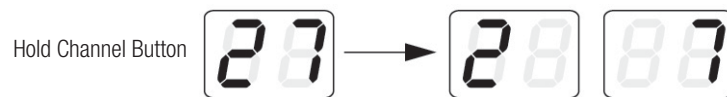
1. Turn the sound system "on", and turn all transmitters "off".
2. Perform Automatic Frequency Selection on the first receiver
3. Turn the first transmitter "on."
4. Perform Automatic Transmitter Setup

Leave the first transmitter on. Repeat for steps 2-4 for the second system.

!! **Note:** Be sure that only one transmitter's IR port is exposed when synchronizing a system.

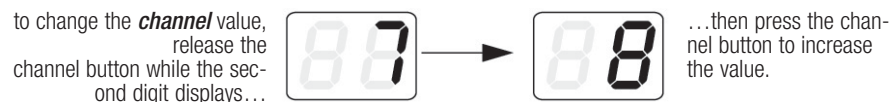
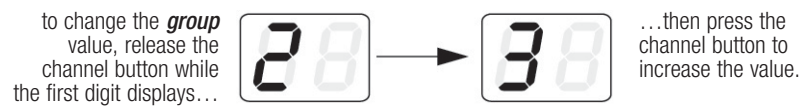
Manual Frequency Selection (receiver only)

To manually select a group or a channel, press and hold the channel button. The display alternates between the group number and the channel number.



Releasing the channel button while either number is displayed makes that displayed number flash. Then, **press** the channel button while the number is flashing to increase the setting by one.

To activate the newly-selected group or channel, simply wait until the number stops flashing.



Receiver locking feature.

The wireless receiver has a locking feature which prevents accidental channel changes.

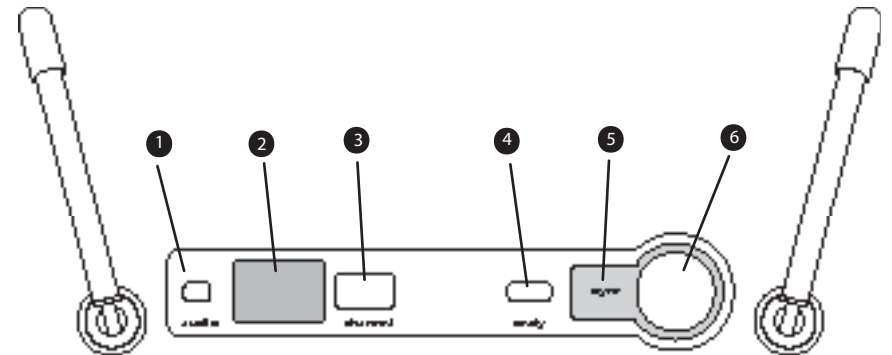
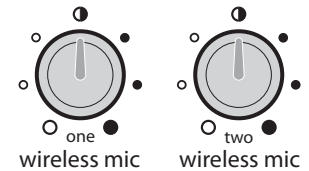
- To lock the channel: Hold the channel button until **both** numbers flash (approximately 10 seconds).
- To unlock the channel: Hold the channel button until **both** numbers flash (approximately 5 seconds).

Digital Wireless system operation.

Your portable sound system is available with single or dual built-in Shure digital wireless systems. The instructions on the following pages describe how to set-up and operate the receiver units and wireless transmitters.

Operating the optional wireless mic system.

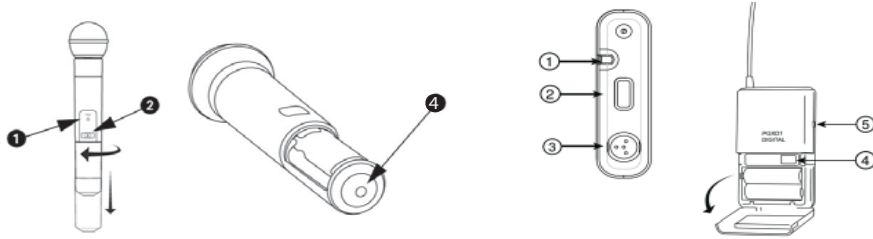
The built-in wireless receiver(s) turn on automatically when the portable sound system is turned "on." Raise the paired left/right antennas up and out at a slight angle; single wireless options will have two antennas, dual wireless will have four. Also, note the location of the wireless mic volume controls on the rear panel.



Features and controls of the built-in wireless receiver.

- 1 **audio** LED: Indicates strength of incoming audio signal: green for normal, amber for strong, red for peak.
- 2 Channel number readout: See "Single System Setup" on page 3.
- 3 **channel** button: See "Single System Setup" on page 3.
- 4 **ready** LED: Green light indicates wireless system is receiving signal.
- 5 Infrared (IR) port: Broadcasts IR signal to transmitter.
- 6 **sync** button: Press and release to synchronize transmitter and receiver frequencies.

Operating the wireless mic/transmitter.



Green	Ready
Flashing green	Controls locked (see "locking feature" below)
Amber	Mute on
Flashing red	IR transmission in process
Glowing red	Battery power low
Pulsing red on startup	Batteries dead (transmitter cannot be turned on until batteries are charged)
Pulsing red after synchronization	Frequency group incompatible; check transmitter group.

- Indicator LED for Power / Infrared (IR) / Mute
- On-Off / Mute switch: Press and hold for 2 seconds to turn "on" (LED green), press and hold again to turn "off." To mute or unmute, press and release.
- 4-Pin Microphone Input Jack.
- IR port: Receives infrared beam to synchronize frequencies.
Note: When using multiple systems, only one transmitter IR port should be exposed at a time.

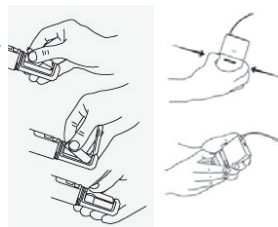
Adjusting gain on Belt Pack Transmitter.

- The bodypack has 26 dB of audio gain adjustment.
 - Increase gain (clockwise +) for microphones
 - Decrease gain (counterclockwise -) for guitars or high-output instruments

Changing batteries.

Install 2 new AA alkaline batteries in the transmitter for best results; expected battery life is approximately 8 hours.

When the transmitter light 1 glows red, replace the batteries.



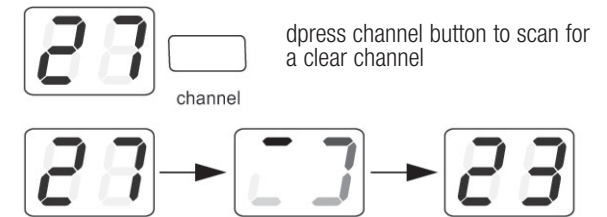
Wireless system set-up.

Each transmitter and receiver pair must be the same frequency, or channel. The Shure wireless system uses transmitter setup to synchronize the transmitter and receiver channels.

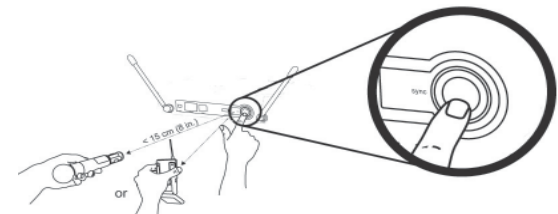
Note: transmitting devices such as cellular phones may interfere with wireless audio transmissions. Keep transmitters and receivers away from these and other potential sources of interference.

Single wireless system set-up.

- Automatic Frequency Selection:** Press and release the channel button. This scans for a clear channel and sets the receiver to that channel.



- Automatic Transmitter Setup:** Turn transmitter "on". Open the transmitter's battery compartment to display the infrared (IR) port (see page 2). With the transmitter IR port exposed to the wireless receiver, press and release the **sync** button until the red light stops flashing on both receiver and transmitter.



When the receiver's ready light glows green, the system is ready for use. Close the transmitter battery compartment.

Transmitter locking feature.

The transmitter (handheld and body-pack) has a locking feature which prevents accidental muting or turning off during performance.

- To lock the controls: With the transmitter "off", hold the power button down until the green LED flashes (approximately 5 seconds).
- To unlock the controls: With the transmitter "on", hold the power button down until the green LED flashes (approximately 5 seconds).